

# HAC ALARMS



**OF QUALITY  
AND DISTINCTION**



Specially  
manufactured  
by the "HAC" Factory  
for the British Market

Manufacturers of Alarm Clocks  
for more than sixty years

Guaranteed Reliable Movements  
for the Horological Trade

1 9 3 7

MADE IN WURTTENBERG

08/1000 **Nickelled**  
08/1001 **Burgundy Brown**  
(old No. 9043½ 8201½)



Height 7 inches  
Diameter of Case 4 inches

08/1003 **Nickelled**  
08/1004 **Burgundy Brown**  
08/1005 **Blue**  
08/1006 **Green**  
(old No. 9052½ 8209½)



Height 7 inches  
Diameter of Case at back 5 inches



Height 6 inches  
Diameter of Case 4 inches

- 08/1039 Nickelled
- 08/1040 Burgundy Brown
- 08/1041 Blue
- 08/1092 Green

(old No. 9037 1/2 8219 1/2)



Height 5 1/4 inches  
Diameter of Case 4 inches

- 08/1090
- Seamless Non-Tarn Nickel Case
- The Clockmaker's Alarm

(old No. 8211 1/2)



Height 4 3/4 inches  
Diameter of Case 3 3/4 inches

- 08/1076 Burgundy Brown
- 08/1077 Blue
- 08/1078 Green

(old No. 8216 1/2)



Height 4 3/4 inches  
Diameter of Case 3 3/4 inches

- 08/1021 Burgundy Brown
- 08/1022 Blue
- 08/1023 Green

(old No. 9059 1/2 8203 1/2)



Height 5 1/4 inches  
Diameter of Case 4 inches

- 08/1009 Burgundy Brown
- 08/1010 Blue
- 08/1011 Green

(old No. 9060 1/2 8204 1/2)



Height 4  $\frac{1}{4}$  inches  
Diameter of Case 3  $\frac{3}{4}$  inches



Height 4  $\frac{1}{4}$  inches  
Diameter of Case 3  $\frac{3}{4}$  inches



Height 5  $\frac{1}{4}$  inches  
Diameter of Case 4  $\frac{1}{4}$  inches  
Hippo Alarm

08/1014 Blue  
08/1016 Burgundy Brown

08/561 Burgundy Brown  
08/562 Blue

(These alarms are supplied with skeleton hands, not block hands as illustrated.)

08/1017 Burgundy Brown  
08/1019 Blue  
08/1020 Green

(old No. 9044  $\frac{1}{2}$ ; 8208  $\frac{1}{2}$ )

## REPEAT ALARMS

Dials are printed "Repeat Alarm"

08/620 Burgundy Brown  
08/621 Blue  
08/622 Green  
Repeat Alarm

(old No. 9037  $\frac{1}{2}$ ; R)

08/616 Burgundy Brown  
08/617 Blue  
08/618 Green  
Repeat Alarm

(old No. 9080  $\frac{1}{2}$ ; R)

08/201 Burgundy Brown  
Repeat Alarm

(old No. 9044  $\frac{1}{2}$ ; R)



Height 6 inches  
Diameter of Case 4 inches



Height 5  $\frac{1}{4}$  inches  
Diameter of Case 4 inches



Height 5  $\frac{1}{4}$  inches  
Diameter of Case 4  $\frac{1}{4}$  inches  
Hippo Repeat



Height 5 $\frac{1}{4}$  inches  
Diameter of Case 4 $\frac{1}{8}$  inches



Height 5 inches  
Diameter of Case 4 $\frac{1}{8}$  inches

## REPEAT ALARMS

### 08/615 Chrome Case

Superior Silvered Dial  
Sunk Centre

#### Repeat Alarm

(old No. 9044 $\frac{1}{2}$  B Chrome)

### 08/1030 Burgundy Brown

#### 08/1081 Blue

White Dial

(old No. 8213 $\frac{1}{2}$ )



Height 3 $\frac{1}{4}$  inches  
Diameter of Case 3 $\frac{1}{8}$  inches

### 08/1031 Chrome Case

with blue enamelled centre band  
Silvered Dial

(old No. 8214 $\frac{1}{2}$ )



Height 3 $\frac{1}{4}$  inches  
Diameter of Case 3 $\frac{1}{8}$  inches

### 08/584 Blue

#### 08/583 Chrome

White Dial with Blue Raised Figures  
Polished Blue Hands

#### Repeat alarm ringing on large Bell inside the case

(old No. 9055 $\frac{1}{2}$  9112 $\frac{1}{2}$ )

### 08/1032 Chrome Case

with Ivory enamelled centre band  
Silvered Dial and Raised Chrome figures  
Convex Glass

(old No. 8215 $\frac{1}{2}$ )



Height 3 $\frac{1}{4}$  inches  
Diameter of Case 3 $\frac{1}{8}$  inches



Height 4  $\frac{1}{2}$  inches  
Diameter of Case 3  $\frac{3}{4}$  inches

**08,578 Chrome Case**

(old No. 9051  $\frac{1}{2}$ )



Height 5 inches  
Diameter of Case 4 inches

**08,217 Blue Case**

White Dial

**08,219 Chrome Case**

Superior Silvered Dial

(old No. 238  $\frac{1}{2}$ )

**08,190 Nickelled Case**

**Dustproof**

30 hour lever T.P.

Solid Steel Pallets

(old No. 9043 T.P.)



Height 5  $\frac{1}{2}$  inches  
Diameter of Case 4 inches

**08,536**

**HAC Dustproof Globe Alarm**

Non-Tarn Nickelled Seamless Case, entirely

Dustproof. Large Superior Movement with

solid Steel pallets. Brass Back

Bevelled Glass

(old No. 54  $\frac{1}{2}$ )



Height 7 inches  
Diameter of Case 4  $\frac{1}{2}$  inches



Height 6 1/4 inches  
Diameter of Case 4 1/4 inches



Height 6 1/4 inches  
Diameter of Case 5 1/4 inches  
Luxor Repeat Alarm  
Motor Lamp Shaped Case with Large Convex Glass

## REPEAT ALARMS

### 08/227 Nickelled Case

Repeat or Continuous Alarm  
on large Bell at back  
Large Movement with change over lever  
(old No. 9038 1/2)

- 08/571 Burgundy Brown
- 08/572 Blue
- 08/573 Green

Repeat or Continuous Alarm  
on large Bell at back  
Large Movement with change over lever

### Chrome Case with coloured Centre Band

Two colour Silvered Dial with the figures  
to match the Case  
(old No. 239 1/2)



## "SILENT TICK ALARMS"

Absolutely no Tick to be heard

Thousands of people would gladly buy such an Alarm if they only knew Alarms with a silent tick were in existence. Why not stock these and demonstrate them as often as possible?

You would find many a Customer who is a light sleeper, who would be glad of this boon.

A special label is supplied with each Alarm, which can be fixed to the back, to draw attention to this Silentic feature, when in your display windows.



Height 4  $\frac{1}{4}$  inches  
Diameter of Case 3  $\frac{3}{4}$  inches



Height 4  $\frac{1}{4}$  inches  
Diameter of Case 3  $\frac{3}{4}$  inches

## SILENTIC ALARMS

**08/589 Burgundy Brown**  
**08/590 Blue**

Two-coloured Ivorine Dial  
with full Radium figures  
(old No. 9099  $\frac{1}{2}$ )

**08/588 Chrome Case**

Silvered Dial with full Radium figures  
(old No. 9099  $\frac{1}{2}$ )

## SILENTIC ALARM



Height 4  $\frac{1}{4}$  inches  
Diameter of Case 3  $\frac{3}{4}$  inches

**08/587 Chrome Case**

on Chrome Base with felt pads  
Silvered Dial with full Radium figures  
(old No. 9100  $\frac{1}{2}$ )

## HAC SILENTIC MOVEMENTS

are fitted only with brass and steel action parts.

No fibre or other substances are used.





Height 5 inches  
Diameter of Case 4 1/2 inches



Height 5 inches  
Diameter of Case 4 1/2 inches

## SILENTIC ALARMS

### 08/586 Blue Case

White Dial with Raised Blue figures  
Polished blue hands  
Radium points and hands

(old No. 9108 1/2)

### 08/585 Chrome Case

Silvered Dial with full Radium figures

(old No. 9107 1/2)

## IDEAL SILENTIC REPEAT ALARM

The most perfect Alarm produced, embodying all features a good Alarm should have.

"Silent Escapement"  
"Advance Signals ringing on bell"  
"Large full luminous figures"

"Chrome non tarnishable fittings"  
"Attractive appearance"  
"Therefore Ideal"

What is the **IDEAL?**  
SILENTIC-REPEAT  
ALARM

It is the perfect alarm  
"with a Conscience".  
Its "Silent Tick" does not disturb your sleep.

Each morning it will awake you quietly by a short ring of a silvery toned bell 10 minutes and then again 5 minutes before the time set. Now comes the steady alarm which is stopped by a gentle pressure on the top button. **This is a boon!** It awakens you gently and after the extra 10 minutes doze you are ready for your days work. Fitted with luminous figures and hands visible at night.

**The result of sixty years experience in manufacturing alarm clocks by the "HAC" factory are embodied in the technical construction of this Alarm.**



**IDEAL SILENTIC  
REPEAT ALARMS**



Height 4 1/4 inches  
Diameter of Case 3 1/2 inches

**08/593 Chrome Case**

Silvered Dial with full Radium figures



Height 5 1/4 inches  
Diameter of Case 4 1/4 inches

**08/591 Burgundy Brown**

**08/592 Blue**

Chrome fittings

Two coloured Beige Dial with figures to  
match the Case

Full Radium figures

(old No. 9092 1/2)

For description of these Alarms see page 15



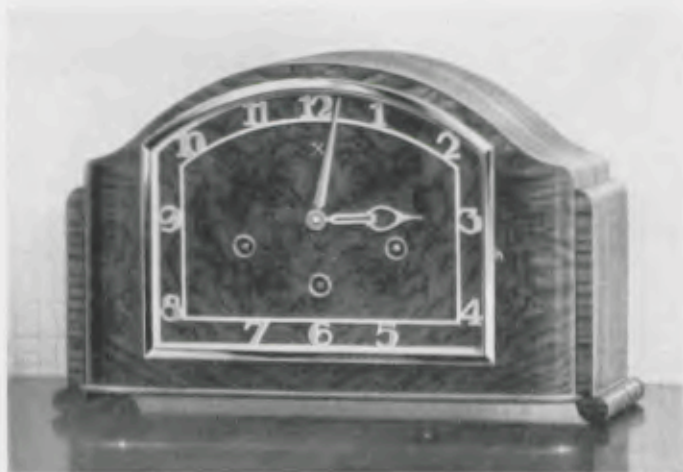
**ILLUSTRATING LIFE-SIZE OF "HAC"  
4 INCH ALARM CLOCK**

Manufacturers also of all kinds of  
Chrome Clocks & Wood Timepieces, Bracket & Chime Clocks



7 $\frac{1}{2}$  x 10 $\frac{1}{4}$  inches

017/984



7 $\frac{1}{2}$  x 11 $\frac{1}{4}$  inches

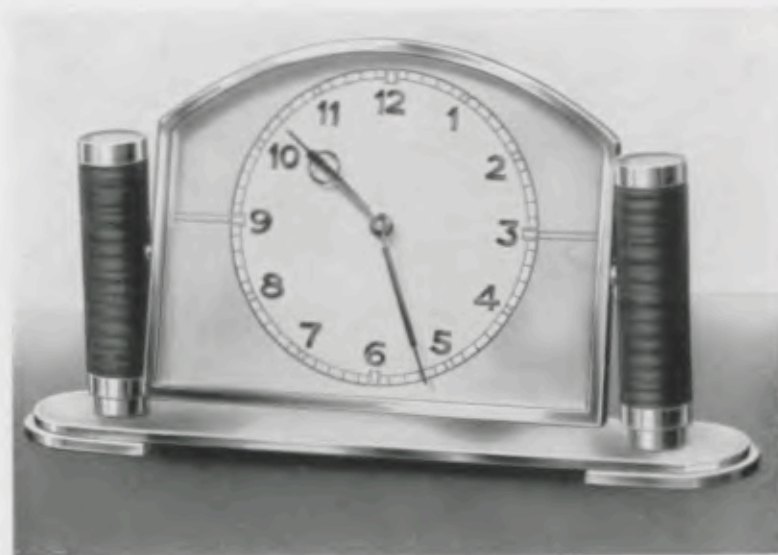
017/989

Ask your Wholesaler for details



23 x 23 cm = 9 x 9 inches

03/55



17.5 x 31 cm = 7 x 12 $\frac{1}{4}$  inches

010/94



