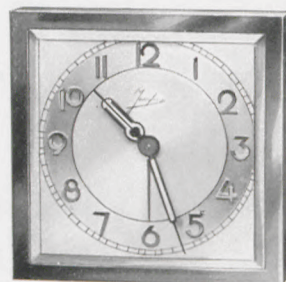


GRUPPE 101

Reiseuhren

Travelling watches – Montres de voyage – Relojes para viaje



6,5 x 6,5 cm = 2 1/2 x 2 1/2 inches

**101/117 RP** Kalotte viereckig, Werk J 66 (ohne Etui) für Etuiausschnitt 63 x 63 mm  
 Square calotte, movement J 66 (without leather case) for case-opening 63 x 63 mm  
 Calotte carrée, mouvement J 66 (sans écriin) pour ouverture d'écriin de 63 x 63 mm  
 Máquina completa J 66 (sin estuche) para abertura de estuche de 63 x 63 mm



9 x 9 cm = 3 1/2 x 3 1/2 inches

**Viereck-Silberblatt mit blauen Reliefzahlen, Radium-Punkte und -Zeiger, verchromter Rahmen**  
 Square silver dial with blue raised figures, luminous points and hands, chromium plated bezel  
 Cadran carré argenté avec chiffres bleus en relief, points et aiguilles lumineux, lunette chromée  
 Esfera cuadrada plateada, con cifras azules en relieve, puntos y agujas luminosos, bisel cromado



9 x 9 cm = 3 1/2 x 3 1/2 inches

**101/118 RP** Braun Saffian – Morocco brown – Maroquin brun – Cabra morena



9 x 9 cm = 3 1/2 x 3 1/2 inches

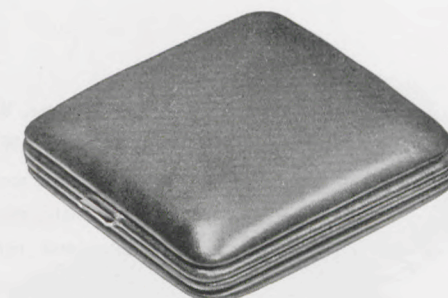
**101/119 RP** Saffian cochenillerot – Cochineal morocco – Maroquin cochenille – Cabra cochenilla

**1 Tag Weckerwerk No. J 66** – 1 day alarm movement No. J 66  
 30 heures réveil mouvement No. J 66 – 30 horas despertador máquina No. J 66



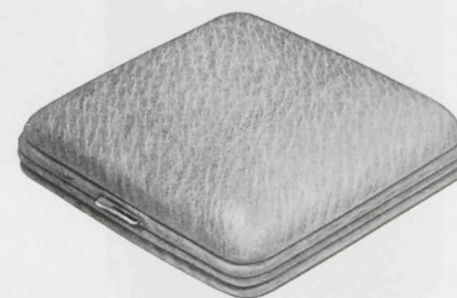
9 x 9 cm = 3 1/2 x 3 1/2 inches

**101/120 RP** Krokodilimitation, dunkelbraun – Brown crocodile, grained – Crocodile grain, brun  
 Piel de cocodrilo imitación, moreno



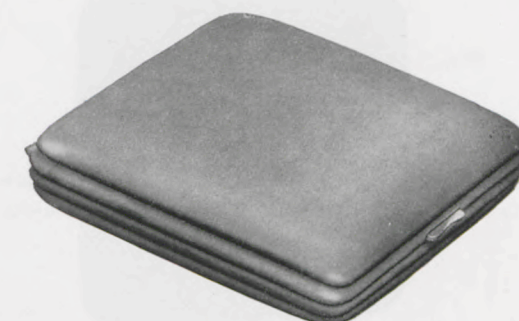
9 x 9 cm = 3 1/2 x 3 1/2 inches

**101/128 RP** Schwarz Saffian – Black morocco – Maroquin noir – Cabra negra



9 x 9 cm = 3 1/2 x 3 1/2 inches

**101/123 RP** Schweinsleder – Hog skin – Cuir de porc  
 Cuero de puerco



9 x 9 cm = 3 1/2 x 3 1/2 inches

**101/127 RP** Mausgrau Samtleder – Mouse-grey velvet-leather – Velours gris souris – Terciopelo gris ratón



11 x 7,5 cm = 4 3/8 x 3 inches

**101/124 RP** Saffian-Schaffleder, braun – Brown sheep's skin, morocco grained  
 Mouton grain maroquin, brun – Badana tafilete, moreno

**101/125 RP** Saffian-Schaffleder, rot – Red sheep's skin, morocco grained  
 Mouton grain maroquin, rouge – Badana tafilete, rojo

**101/126 RP** Braun Carara matt – Brown carara mat  
 Carara brun mat – Carara mate, moreno

Frontabsteller – Frontal stopper – Arrêt frontal – Paradero frontal

**1 Tag Weckerwerk No. J 66** – 1 day alarm movement No. J 66  
 30 heures réveil mouvement No. J 66 – 30 horas despertador máquina No. J 66