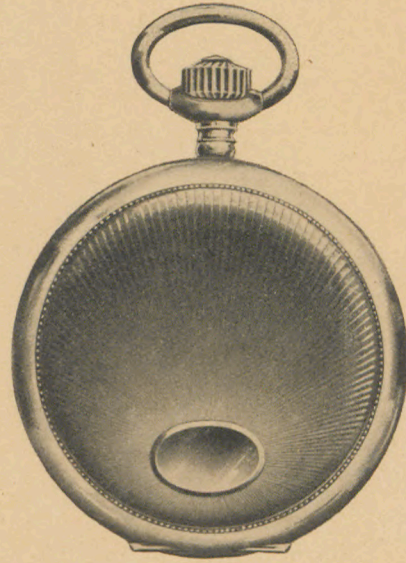


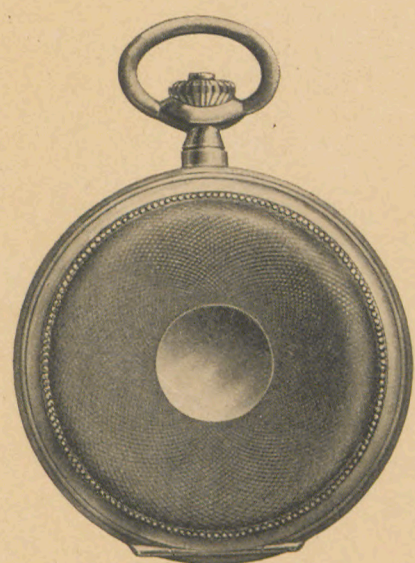


Schramberger Erzeugnis

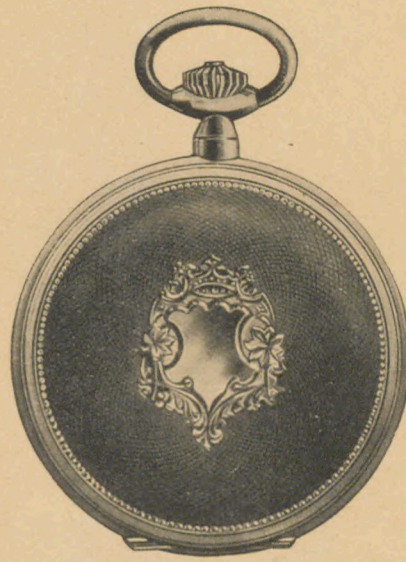
Deutsche Präzisions-Taschenuhr  
in Goldplaqué-Gehäuse, 10 Jahre Garantie, mit Sprungdeckel  
Meisterwerk



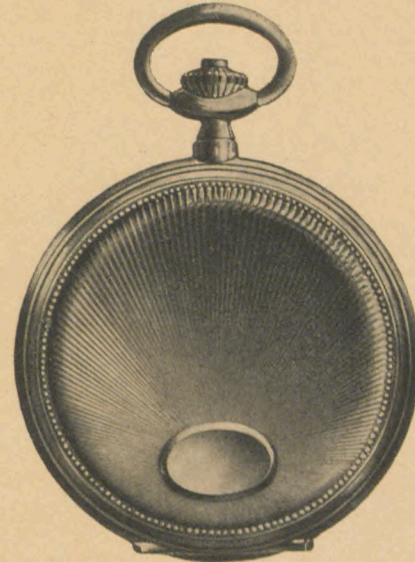
1/48 19''' bassine,  
rayons, oval



1/49 19''' Louis XV,  
à gouge, perlé, guilloché, rond



1/50 19''' Louis XV,  
à gouge, perlé, guilloché, écusson orné



1/51 19''' Louis XV,  
à gouge, perlé, rayons, oval